



Department of Transportation & Public Facilities Alaska Marine Highway System

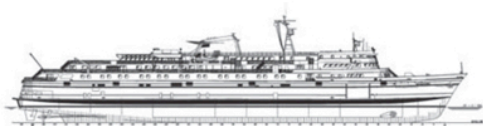
Southeast Conference

Captain Michael Neussl, DOT&PF Deputy Commissioner for Marine Operations

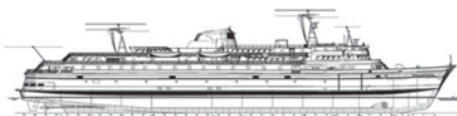
September 13, 2011



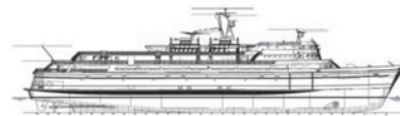
Fleet Profile



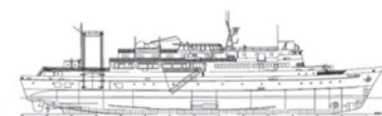
MV Matanuska
408 feet
Built 1963



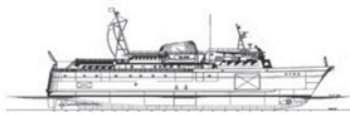
MV Malaspina
408 feet
Built 1963



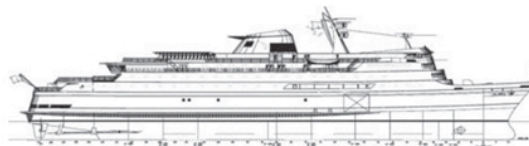
MV Taku
352 feet
Built 1963



MV Tustumena
296 feet
Built 1964



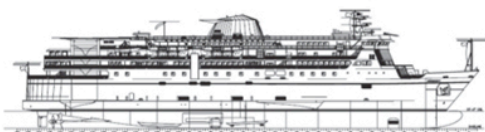
MV LeConte
235 feet
Built 1974



MV Columbia
418 feet
Built 1974



MV Aurora
235 feet
Built 1977



MV Kennicott
382 feet
Built 1998



FVF Fairweather
235 feet
Built 2004



MV Lituya
181 feet
Built 2004



FVF Chenega
235 feet
Built 2005



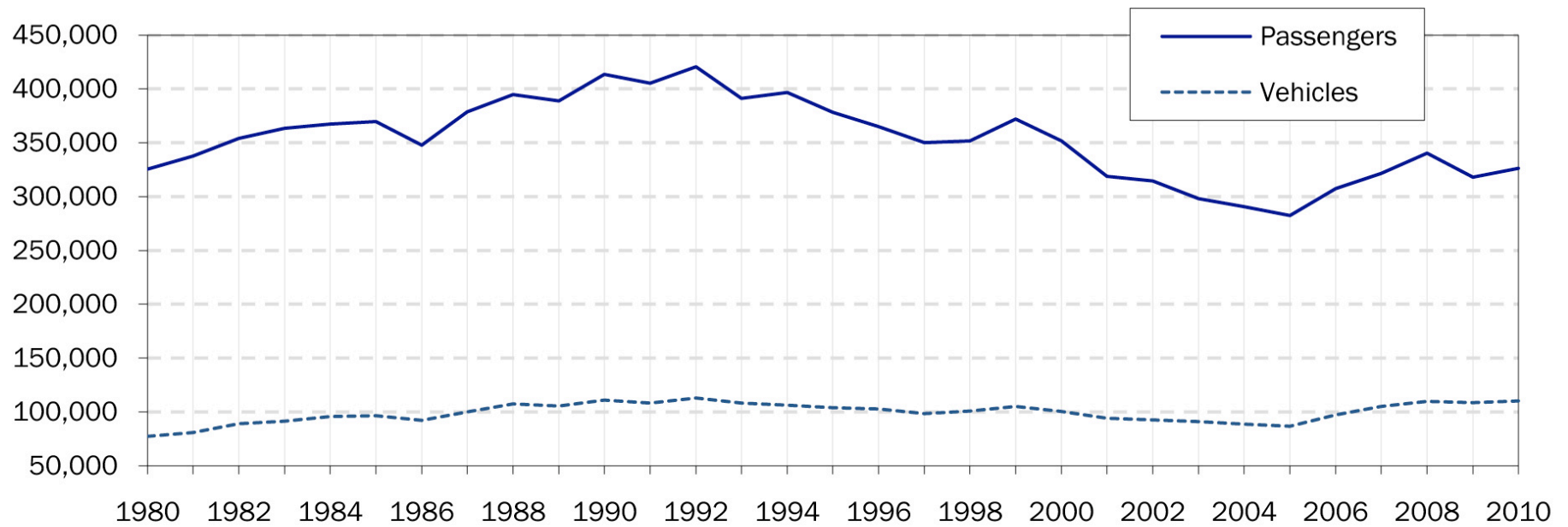
Passenger and Vehicle Traffic

PASSENGERS			
Year	Southeast	Southwest	Total
1990	363,122	50,271	413,393
1991	368,780	36,248	405,028
1992	372,680	47,756	420,436
1993	342,613	48,678	391,291
1994	347,998	48,545	396,543
1995	332,712	45,373	378,085
1996	318,864	46,053	364,917
1997	300,653	49,450	350,103
1998	303,076	48,337	351,413
1999	323,608	48,437	372,045
2000	301,244	50,216	351,460
2001	270,507	48,384	318,891
2002	263,105	51,304	314,409
2003	245,818	52,147	297,965
2004	240,666	49,959	290,625
2005	233,667	48,569	282,236
2006	237,965	69,255	307,220
2007	249,310	72,299	321,609
2008	268,335	72,077	340,412
2009	242,940	74,951	317,891
2010	251,503	74,810	326,313

VEHICLES			
Year	Southeast	Southwest	Total
1990	94,730	16,310	111,040
1991	95,173	12,860	108,033
1992	97,239	15,656	112,895
1993	92,598	15,696	108,294
1994	90,758	15,245	106,003
1995	88,942	15,031	103,973
1996	87,863	14,809	102,672
1997	82,451	15,878	98,329
1998	84,328	16,490	100,818
1999	88,101	16,921	105,022
2000	82,651	17,484	100,135
2001	76,413	17,533	93,946
2002	74,460	17,943	92,403
2003	72,386	18,586	90,972
2004	69,993	18,620	88,613
2005	67,938	18,580	86,518
2006	71,609	25,461	97,070
2007	77,000	27,913	104,913
2008	82,040	27,799	109,839
2009	77,671	30,870	108,541
2010	79,745	30,330	110,075



Traffic Trends





Financial Update

	FY10 Actual	FY11 Estimate	FY12 Budget
Operating Expenses:	\$140,261.0	\$156,040.0	\$157,969.0
Total Revenues:	\$47,002.0	\$50,520.0	\$52,162.0
State CIP Expenses-			
Vessel and Terminal Overhaul:	\$9,400.0	\$12,000.0	\$15,540.0
Deferred Maintenance:	\$940.0	\$2,500.0	\$3,700.0

In thousands, does not include Federal funding



Scheduling Changes

- Summer 2012 schedule highlights; changes made after 3 years of steady scheduling:
 - Malaspina homeport change (from Skagway to Juneau)
 - Fairweather to service Angoon
 - Hoonah overnight for LeConte
 - Gustavus service increases
 - Continuation of Bellingham to Whittier express run
 - Continue twice per month Aleutian chain service in summer



New Initiatives

- Redesigned AMHS website
- Vessel Tracking Feature
- New Reservation System
- AMHS 50th Anniversary Celebration

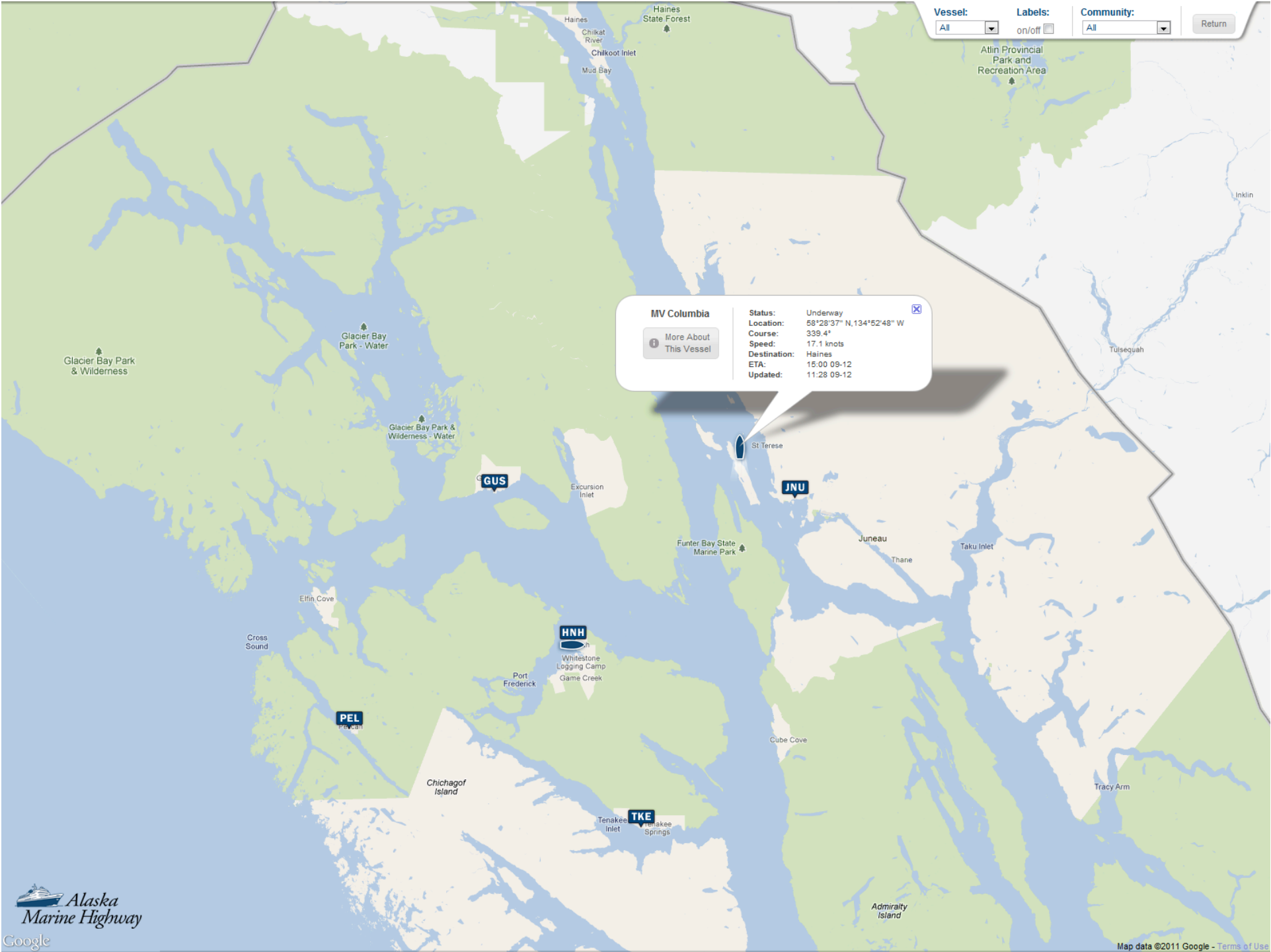
The screenshot shows the Alaska Marine Highway System website. At the top, there is a navigation bar with links for 'myAlaska', 'My Government', 'Resident', 'Business in Alaska', 'Visiting Alaska', and 'State Employees'. Below this is the 'Alaska Department of Transportation & Public Facilities' logo and the 'Alaska Marine Highway System' title. A search bar is located on the right. The main navigation menu includes 'Home', 'Plan a Trip', 'Reservations', 'Specials', 'Travel Details', 'Explore Alaska', 'About Us', 'News & Updates', and 'Sailing Search'. A dropdown menu for 'Reservations' is open, showing options like 'System Map', 'Fare Tables', 'Routes & Running Times', 'Sailing Calendar', 'Schedule Search', and 'PDF Schedules'. The main content area features a large image of a ferry deck with passengers. Below the image are three promotional boxes: 'Get Your Free DVD', 'Request a Schedule', and 'Find a Sailing'. The 'Find a Sailing' box contains a form with 'Leaving From' and 'Going To' dropdowns, a 'DEPARTURE DATE' field, and a 'Search' button. Below these are 'Headlines' and 'Schedule Changes' sections. The 'Headlines' section lists news items such as 'FVF Fairweather Returns to Service' and 'ADOT&PF Releases 2010 Annual Report'. The 'Schedule Changes' section includes updates for 'FVF Fairweather' and 'MV Lituya'. At the bottom left, there is a 'Zarembo Island' map and a 'Vessel Tracking' section with a table of vessel information.

Ship Name	Status	Location	Course	Speed	Destination
MV Malaspina	Underway	59°33'N 141°13'W	245.0°	14.2 knots	Wenatchee

MV Columbia

[More About This Vessel](#)

Status:	Underway
Location:	58°28'37" N, 134°52'48" W
Course:	339.4°
Speed:	17.1 knots
Destination:	Haines
ETA:	15:00 09-12
Updated:	11:28 09-12





System Improvements

- Dock repairs at Hoonah
- Dock replacement at Angoon
- Prince Rupert Lease
- Annette Bay Construction
- Ward Cove
- Projects at Haines, Skagway, Pelican, Kake, Petersburg and Wrangell



Challenges

- Columbia Engines
- FVF Engines
- Requests for new or expanded AMHS service
- Federal funding set-aside cuts



AMHS Messaging

- AMHS serves all of Alaska
- Marine Transportation Advisory Board (MTAB) and its 11 members exist as public conduit into AMHS
- GovDelivery Method of Communications for MTAB and AMHS



Alaska Department of Transportation & Public Facilities

DOT&PF State of Alaska

- Home
- Travel Info
- Doing Business w/Us
- Divisions/Sections
- Employment
- Public Notices
- Employee Directory



Aviation



Highways



Ferries



Design & Engineering



Transit



Measures & Commercial Vehicles



Safety



Ports & Harbors



Marc A. Luiken
COMMISSIONER

Our mission is to "Get Alaska Moving through service and infrastructure."



Alaska DOT&PF Economic Stimulus



Receive News, Updates & More by Email & Text



Traveler Information



Alaska DOT&PF Performance Dashboard



[Accessibility](#) [Title VI Nondiscrimination](#) [Terms of Use](#) [Copyright Info](#) [DOT&PF Employee Directory](#) [Links for DOT&PF Staff](#)



Headlines

- » **NEW** August 26: Paving Delay Affects Kotzebue Airport
- » **NEW** August 26: Expanding Business Top Priority for 2nd Air Cargo Summit
- » **NEW** August 25: ADOT&PF Releases 2010 Annual Report; Publication provides a glimpse into the department's mission
- » August 23: NASA Collaborates on Cargo Airship Workshop in Alaska
- » August 22: Fairweather Sailings Canceled, Repair Underway
- » August 20: Alaska DOT&PF Closing the Copper River Highway
- » Aug. 17: Alaska Marine Highway System Launches Redesigned Website featuring Real-Time Vessel Tracking
- » Press Release Archive

Highlights

- » ASK DOT&PF!
- » **NEW** 2010 Department Overview
- » *The DOT&PF website is under redesign, so you may notice some temporary layout differences. Contact the webmaster with questions. Thanks for your patience.*
- » Employee Spotlight: Recognizing our outstanding DOT&PF employees

How Do I...

- » Make a ferry reservation on the Alaska Marine Highway?
- » Find a Scenic Byway?
- » Find a job with the DOT&PF?
- » Get an Alaska Highway Map?
- » Participate in the Adopt-A-Highway program?
- » Report a Traffic Crash?
- » Contact the Division of Motor Vehicles?
- » Find road weather information?
- » Apply for a Right of Way permit?
- » Lease space at a Rural Airport?

Quick Links

- » Find a DOT&PF employee
- » Key Department Contacts
- » Regions
- » Frequently Asked Questions
- » 2010-2013 STIP
- » Procurement
- » Public Notices
- » Alaska Railroad
- » Other State DOTs
- » US DOT
- » Alaska Region FAA
- » FHWA
- » FTA
- » Government Links

Project Information

- » **Project Reporting** - Status of Active Statewide Projects
- » Other Project Information
 - » Statewide Projects
 - » Central Region
 - » Northern Region
 - » Southeast Region

Above Photo Banner: Kalifornsky Beach Road, Pedestrian Pathway project near Kenai. Photo by Jonathon Tague, Alaska DOT&PF

Department of Transportation & Public Facilities
PO Box 112500
3132 Channel Drive
Juneau, Alaska 99811-2500
Phone: 907-485-3900 || 907-586-8365 (FAX)

Email Updates

To sign up for updates or to access your subscriber preferences, please enter your contact information below.

Subscription Type

Email Address *

Your contact information is used to deliver requested updates or to access your subscriber preferences.

[Privacy Policy](#) - [Help](#)



NOTIFICATION

ALASKA DEPARTMENT OF
TRANSPORTATION & PUBLIC FACILITIES



New Subscriber

Subscription Type

Primary Email Address

You must enter a primary email address. You will use this to access and update your subscriptions or modify your subscriber preferences.

Email Address *

Confirm Email Address *

Email Delivery Preference

If you would like to change how subscription updates are delivered to you, select an option below.

- Send updates immediately by email
- Send updates daily by email
- Send updates weekly by email

Certain high priority updates may be sent regardless of your delivery preferences.

Optional Password

Enter an optional password to add password protection to your subscriber preferences.

Password

Confirm Password

Your contact information is used to deliver requested updates or to access your subscriber preferences.

[Privacy Policy](#) - [Help](#)



NOTIFICATION

ALASKA DEPARTMENT OF TRANSPORTATION & PUBLIC FACILITIES



Welcome jess.mccarron@gmail.com

Quick Subscribe for jess.mccarron@gmail.com

Alaska Department of Transportation & Public Facilities offers updates on the topics below. Subscribe by checking the boxes; unsubscribe by unchecking the boxes.

Access your [subscriber preferences](#) to update your subscriptions or modify your password or email address without adding subscriptions.

Subscription Topics

Press Box

- Press Releases, Media Advisories and News Alerts

Airports

- Airport News
- Fairbanks International Airport
- Ted Stevens Anchorage International Airport

Alaska DOT&PF Transit

- Community Transit Grant Programs
- Community Transit Program
- Community Transit Program Calendar of Events
- Governor's Coordinated Transportation Task Force (CTTF)

Division of Measurement Standards and Commercial Vehicle Enforcement

- Commercial Vehicle Weight Restrictions
- Measurement Standards & Commercial Vehicle Enforcement Alerts

Doing Business with DOT&PF

- Transportation Economic Stimulus Projects

Ferries

- Alaska Marine Highway Specials
- Alaska Marine Highway System - Ferries
- Alaska Marine Highway System - Schedule Changes
- Alaska Marine Highway System - Marine Transportation Advisory Board

Highways

- Highway Safety Office
- Highway Data**
- Transportation Data Services - Motor Vehicle Traffic Crash Statistics

Railway

- Alaska Railroad Press Releases

Safety

- Highway Safety Grant Information
- Highway Safety Statistics & Publications
- Safe Routes to School Grant Program

Statewide Transportation Improvement Program

- Economic Stimulus
- Statewide Transportation Improvement Program (STIP) and Needs List

Travel Information

- Anton Anderson Memorial Tunnel - Schedules and Hours of Operation



Questions?

